



Highway 11 Shops Searcy, Arkansas



Located less than 1 mile from Searcy Exit 42

Highway 11 Frontage

Total Building Size - 6,000 Square Feet (30' x 200')

5 units - each measuring 30' x 40'

Front walls are 12' and back wall is 10'

Walls can be removed

Each unit has a 10' x 10' roll up door & Steel walk thru door

¾ Acre - more land available

Priced at \$139,900



Larry DeGroat, ABR, CRS, e-PRO, GRI
(501) 268-8489 Direct - (877) 222-8490 Fax
Larry@Searcy4Sale.com
www.Searcy4Sale.com



704 W Beebe Capps Expwy - Searcy, Arkansas 72143

Realty Professionals

Highway 11 Shops Searcy, Arkansas

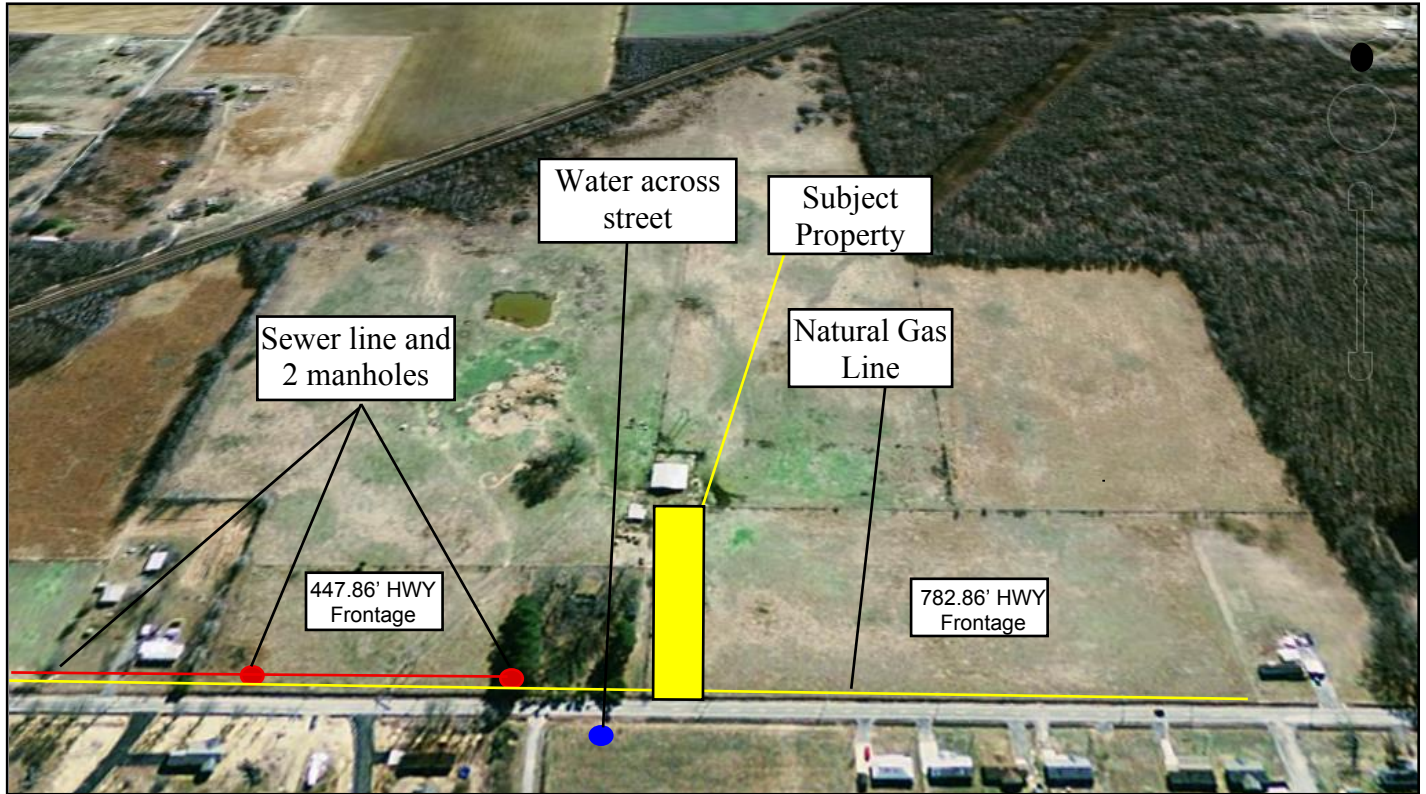


Larry DeGroat, ABR, CRS, e-PRO, GRI
(501) 268-8489 Direct - (877) 222-8490 Fax
Larry@Searcy4Sale.com
www.Searcy4Sale.com



704 W Beebe Capps Expwy - Searcy, Arkansas 72143

**Highway 11 Shops
Searcy, Arkansas**



Sewer line and two manholes are on the East side of the property.

Natural Gas line runs down the North side of property.

Water main is across highway.

447.86 feet of Highway frontage on East Side.

782.86 feet Highway frontage on West Side.



Larry DeGroat, ABR, CRS, e-PRO, GRI
(501) 268-8489 Direct - (877) 222-8490 Fax
Larry@Searcy4Sale.com
www.Searcy4Sale.com

