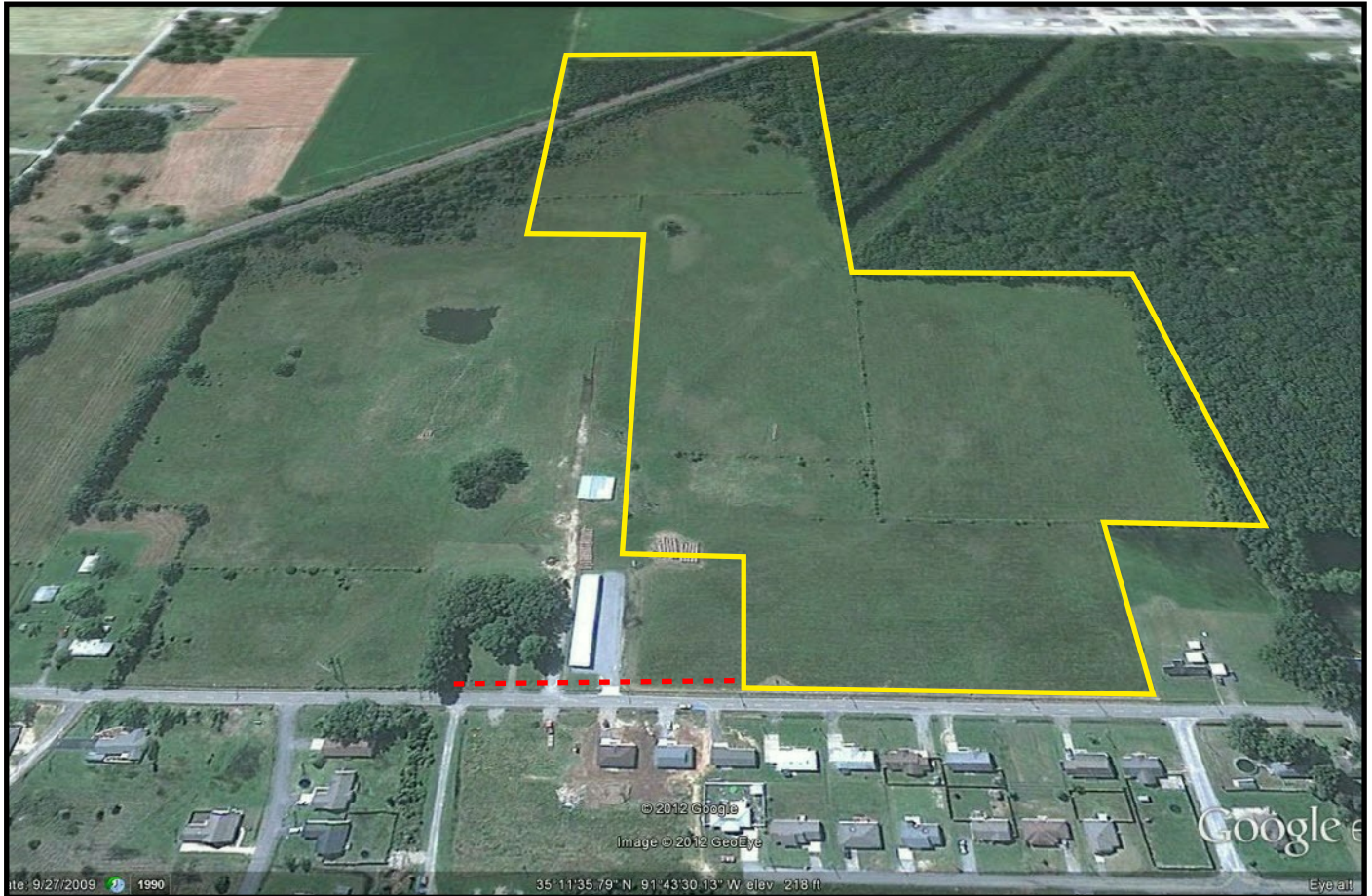




Highway 11 Searcy, Arkansas



Located less than 1 mile from Searcy Exit 42

Highway Frontage

Water, Electric, Natural Gas, Sewer Available

Mostly cleared and level

No mineral rights

Sewer & Utility easement retained where red dash is

Approximately 46 Acres

Priced at \$285,000



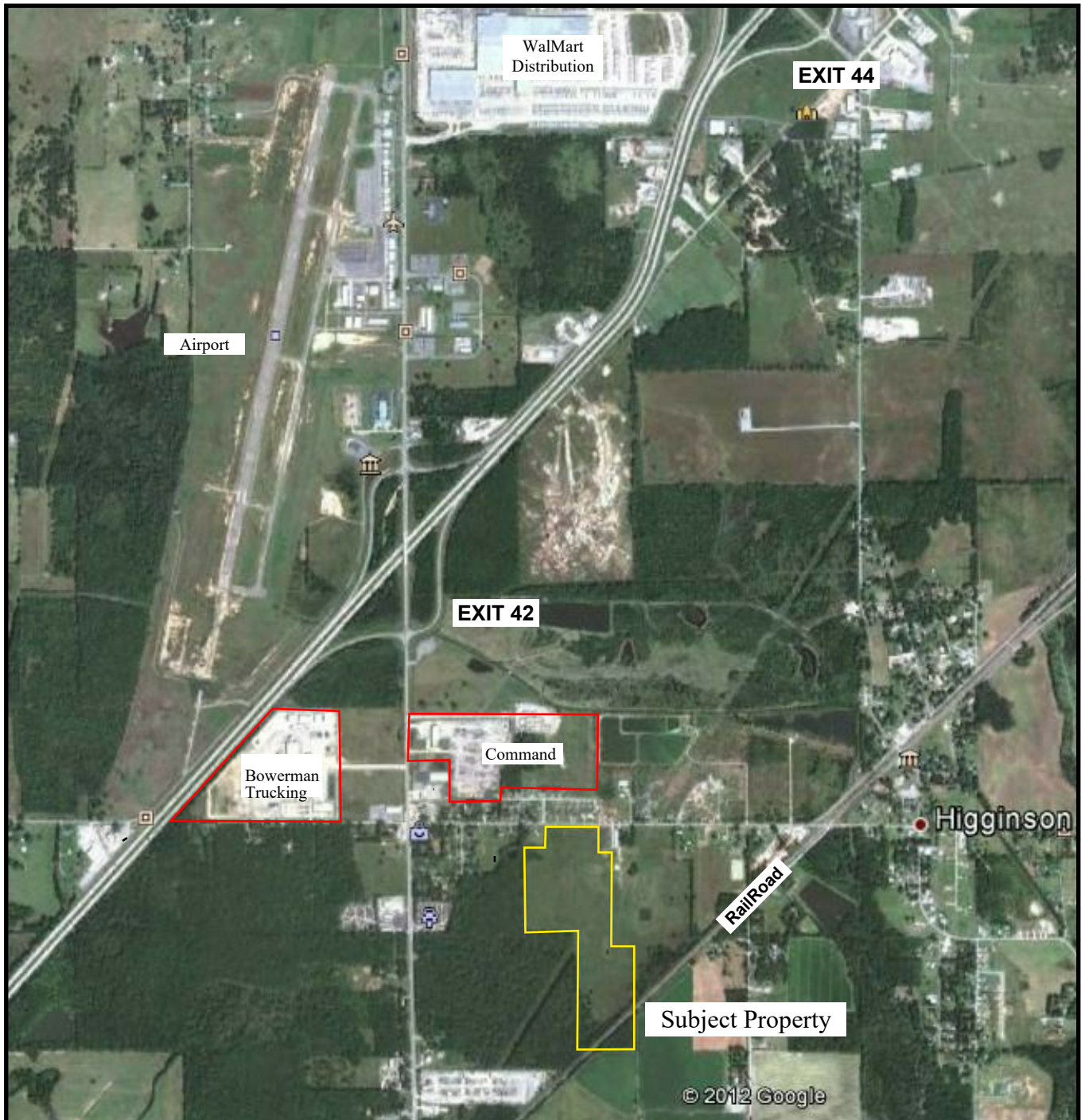
Larry DeGroat, e-PRO, GRI
(501) 268-8489 Direct - (501) 278-7659
Larry@Searcy4Sale.com
www.Searcy4Sale.com



704 W Beebe Capps Expwy. - Searcy, Arkansas 72143



Highway 11 Searcy, Arkansas



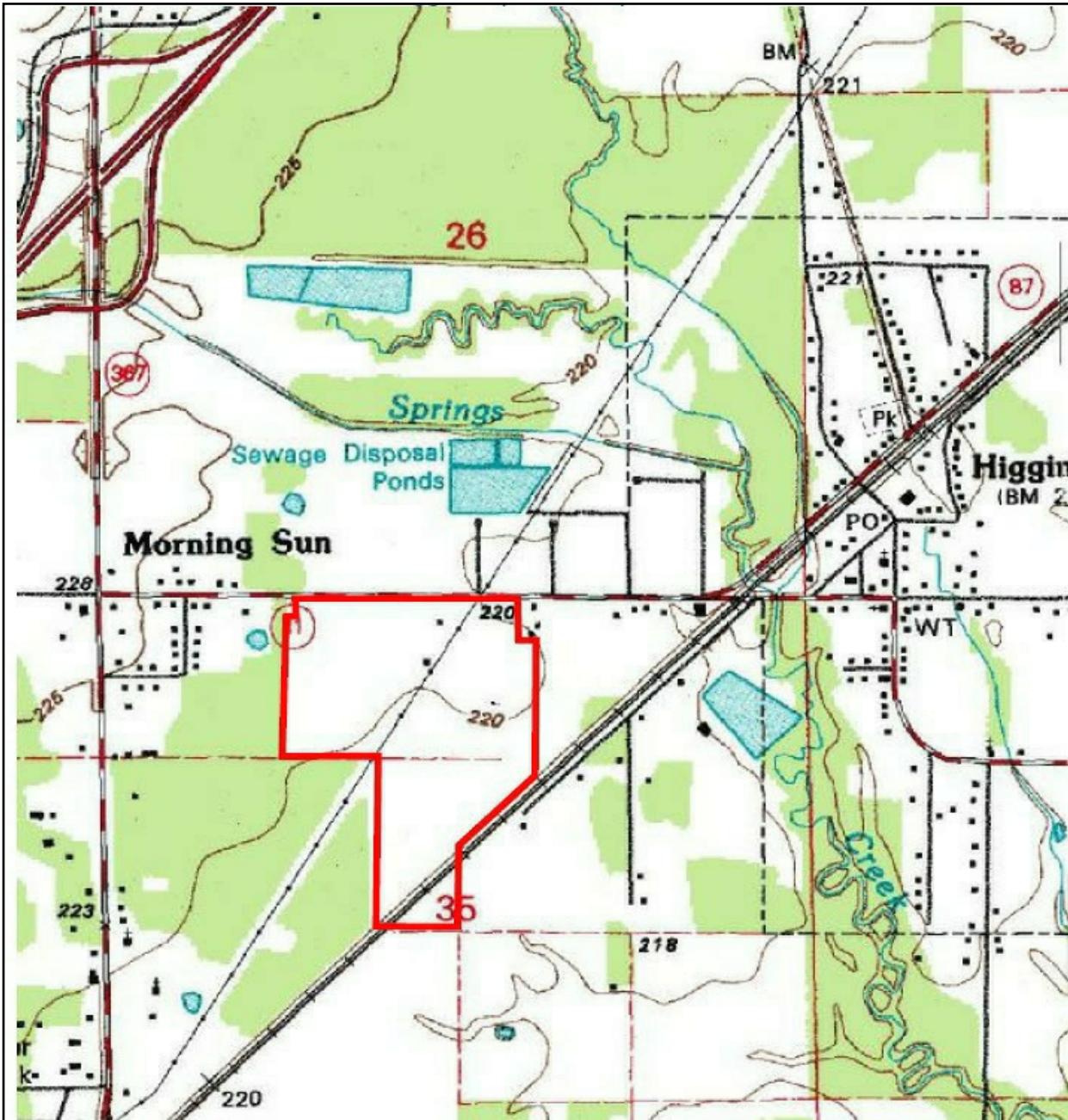
Larry DeGroat, e-PRO, GRI
(501) 268-8489 Direct - (501) 278-7659
Larry@Searcy4Sale.com
www.Searcy4Sale.com



704 W Beebe Capps Expwy. - Searcy, Arkansas 72143



Highway 11 Searcy, Arkansas



Larry DeGroat, e-PRO, GRI
(501) 268-8489 Direct - (501) 278-7659
Larry@Searcy4Sale.com
www.Searcy4Sale.com



704 W Beebe Capps Expwy. - Searcy, Arkansas 72143



FLOOD HAZARD BOUNDARY MAP

WHITE COUNTY, ARKANSAS
UNINCORPORATED AREA
PAGE 10 OF 15
(SEE MAP INDEX FOR PAGES PRINTED)

EFFECTIVE DATE:
JUNE 7, 1977

CONVERTED BY LETTER
EFFECTIVE 3/1/00

COMMUNITY-PANEL NO.
050467 0010 A

**U.S. DEPARTMENT OF HOUSING
AND URBAN DEVELOPMENT
FEDERAL INSURANCE ADMINISTRATION**

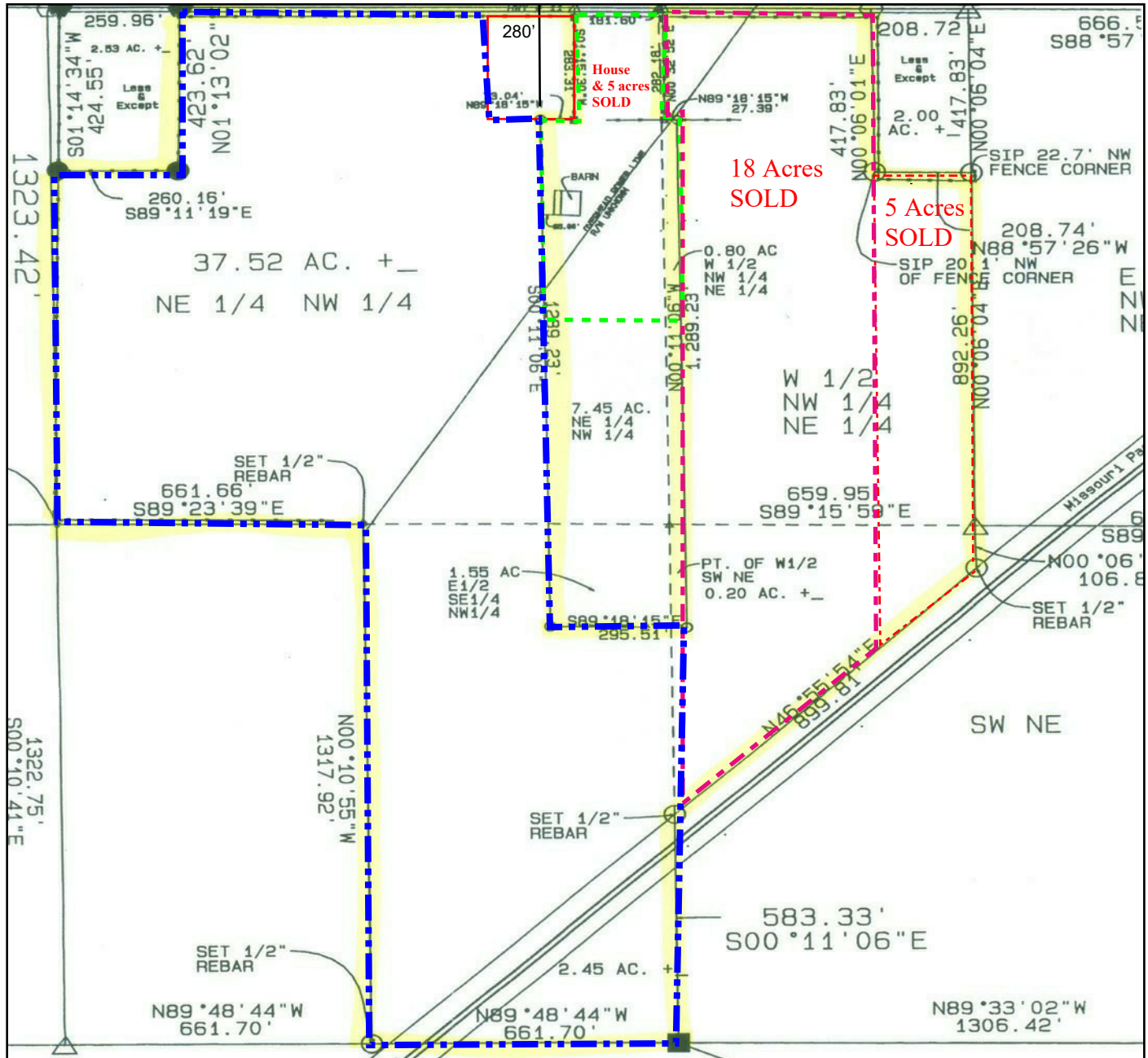
This is an official copy of a portion of the above referenced flood map. It was extracted using F-MIT On-Line. This map does not reflect changes or amendments which may have been made subsequent to the date on the title block. For the latest product information about National Flood Insurance Program flood maps check the FEMA Flood Map Store at www.msc.fema.gov





Highway 11 Searcy, Arkansas

Approximately
580' HWY
Frontage



2024 MEMBER
Searcy Regional
Chamber of
Commerce

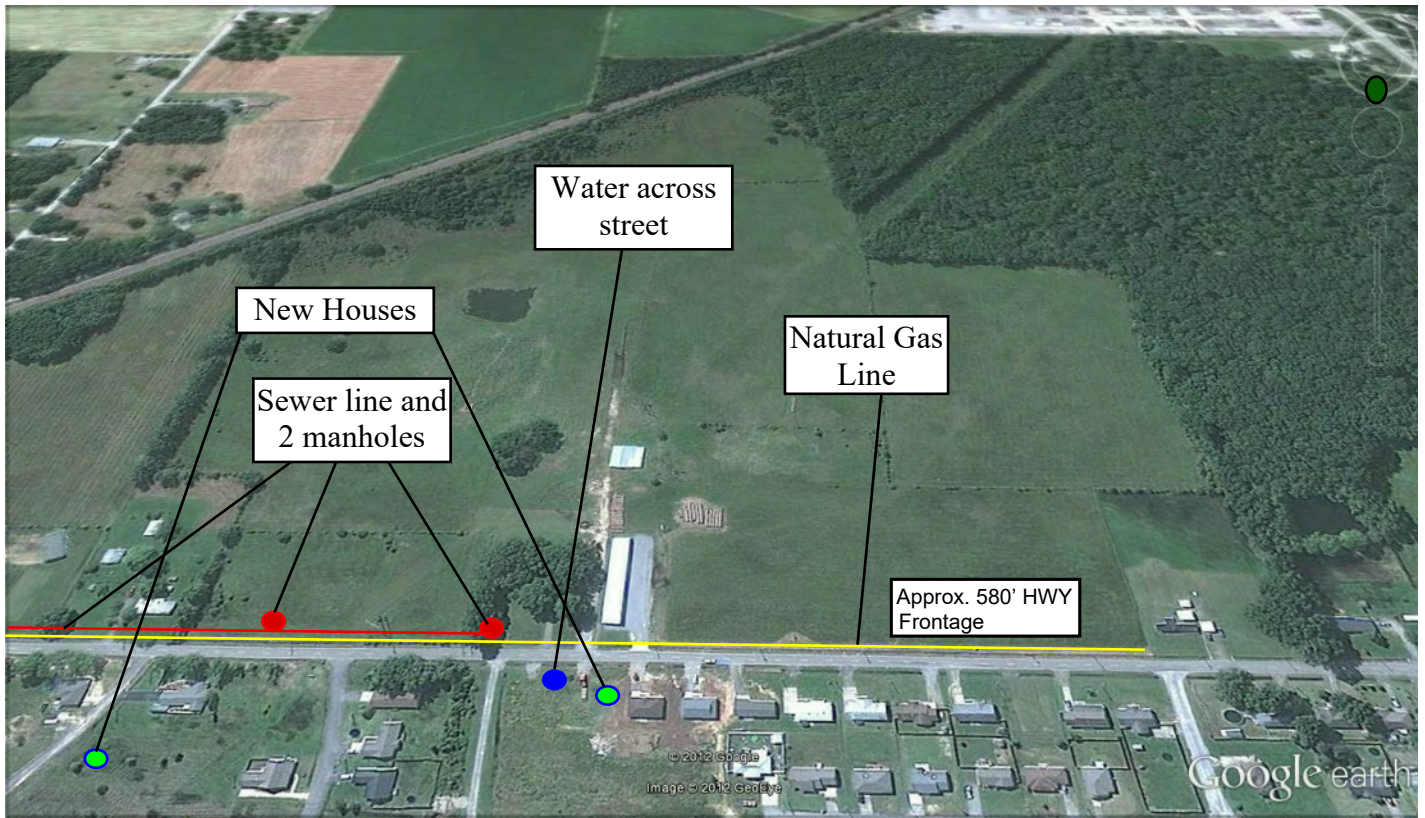
Larry DeGroat, e-PRO, GRI
(501) 268-8489 Direct - (501) 278-7659
Larry@Searcy4Sale.com
www.Searcy4Sale.com



704 W Beebe Capps Expwy. - Searcy, Arkansas 72143



Highway 11 Searcy, Arkansas



Sewer line and two manholes are on the East side of the property.

Natural Gas line runs down the North side of property.

Water main is across highway.

580 feet (approximately) Highway frontage on West Side.

Willing to trade or possible owner finance



Larry DeGroat, e-PRO, GRI
(501) 268-8489 Direct - (501) 278-7659
Larry@Searcy4Sale.com
www.Searcy4Sale.com



704 W Beebe Capps Expwy. - Searcy, Arkansas 72143